



South Central Ambulance Service **NHS**
NHS Foundation Trust

South Central Ambulance NHS Foundation Trust Local Network Update.

Portsmouth

Get involved



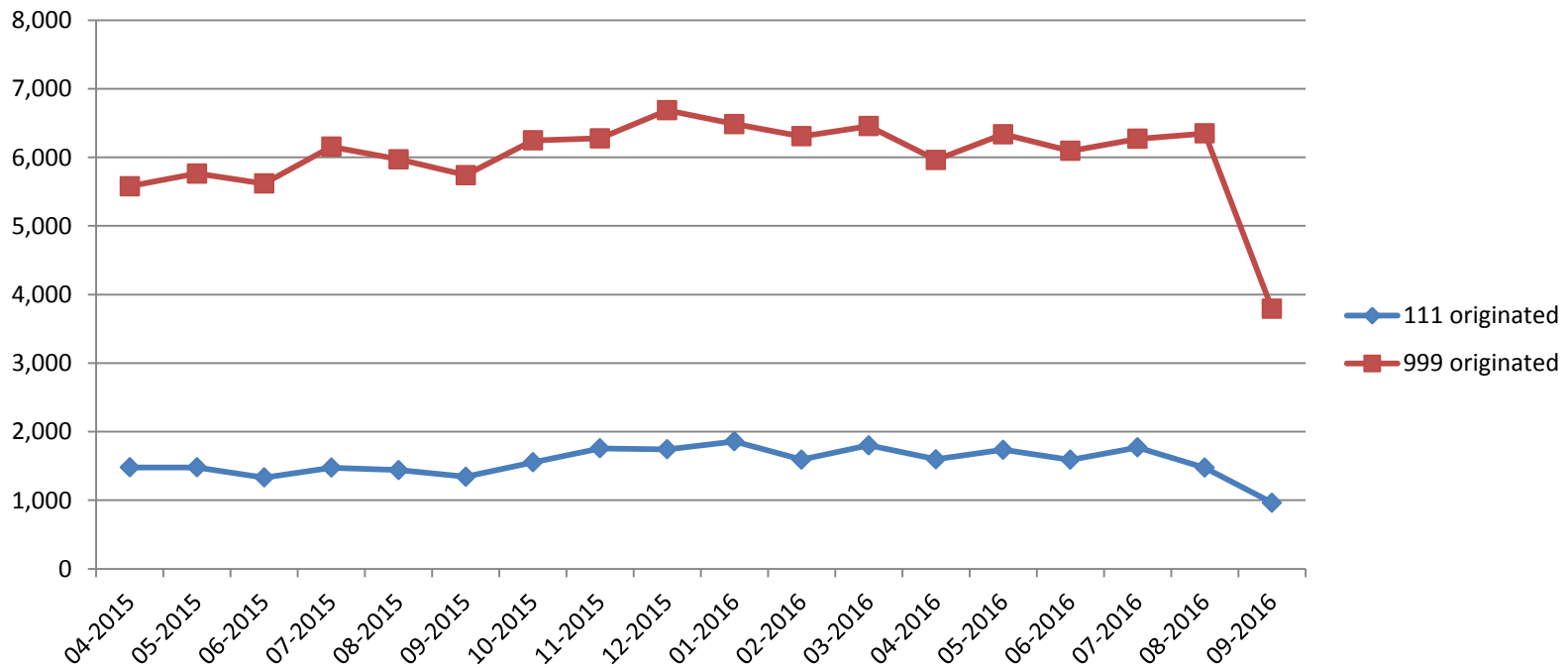
Operational Context

- SE Hampshire Demand
- Portsmouth Demand
- Portsmouth CCG Performance
- Developments
- Risks

Get involved

Activity in SE Hampshire.

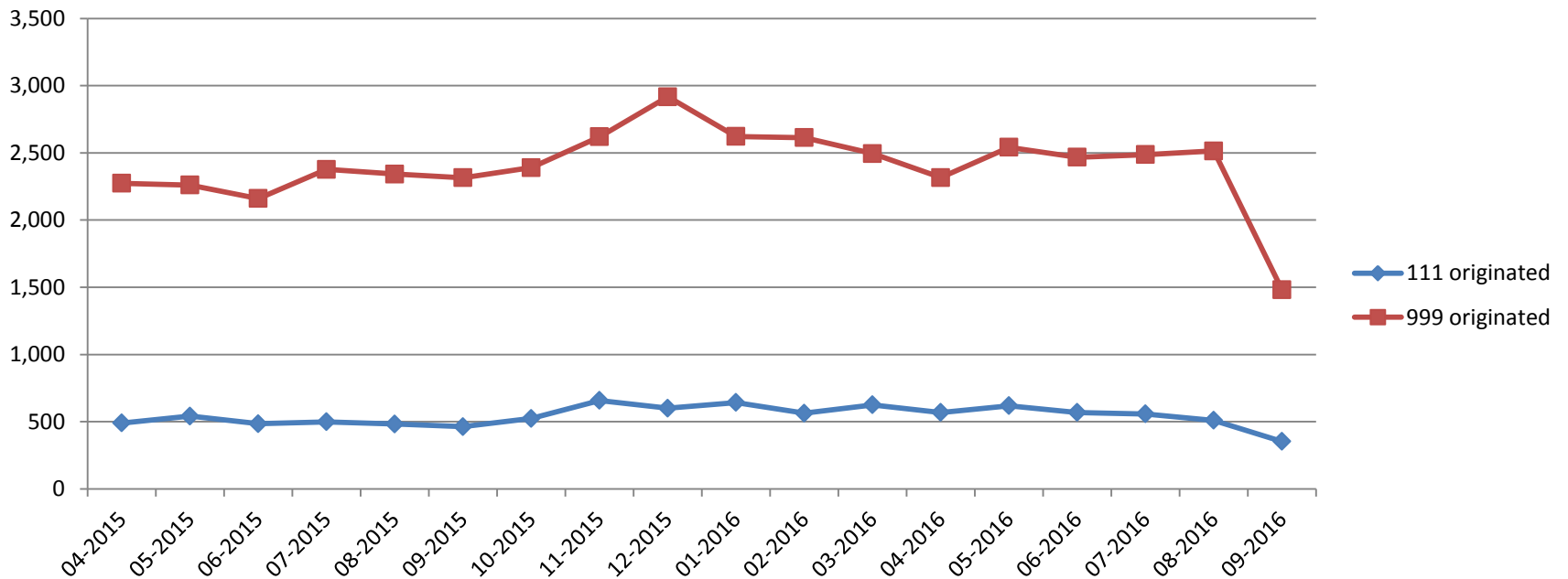
Demand by (111 and 999) 17 Months



Proud to be caring for you!

Activity in Portsmouth.

Portsmouth demand by (111 and 999) for 17 Months

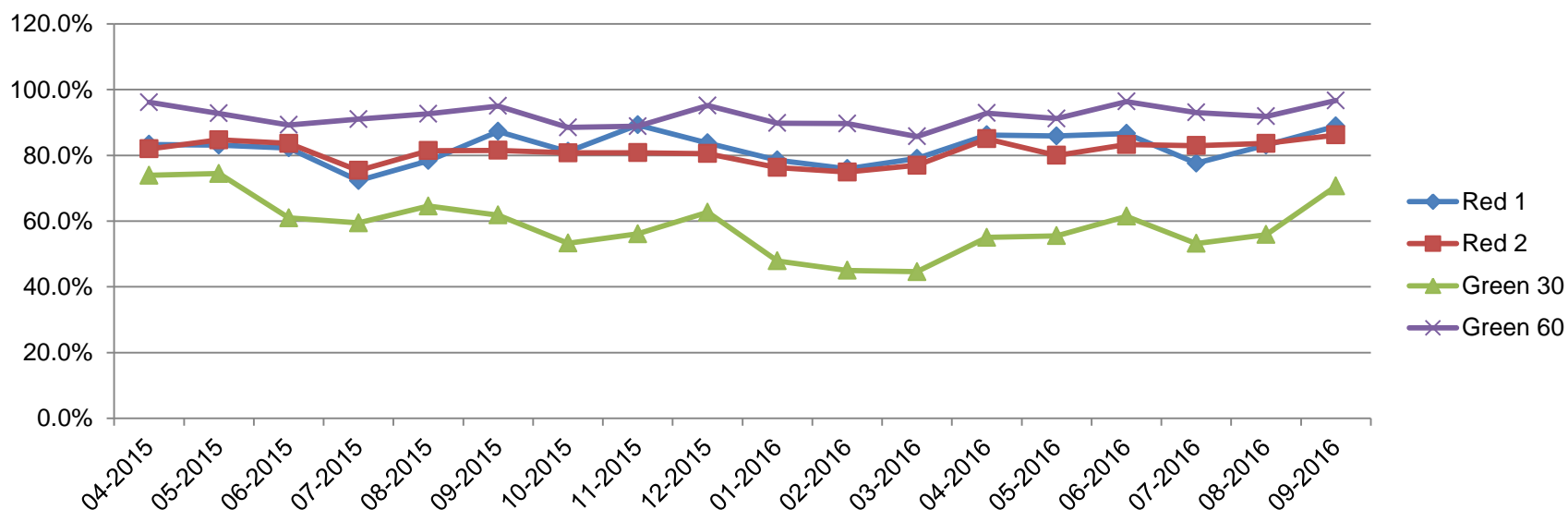


Proud to be caring for you!



Portsmouth CCG Performance.

Portsmouth Performance by Grade 17 Months

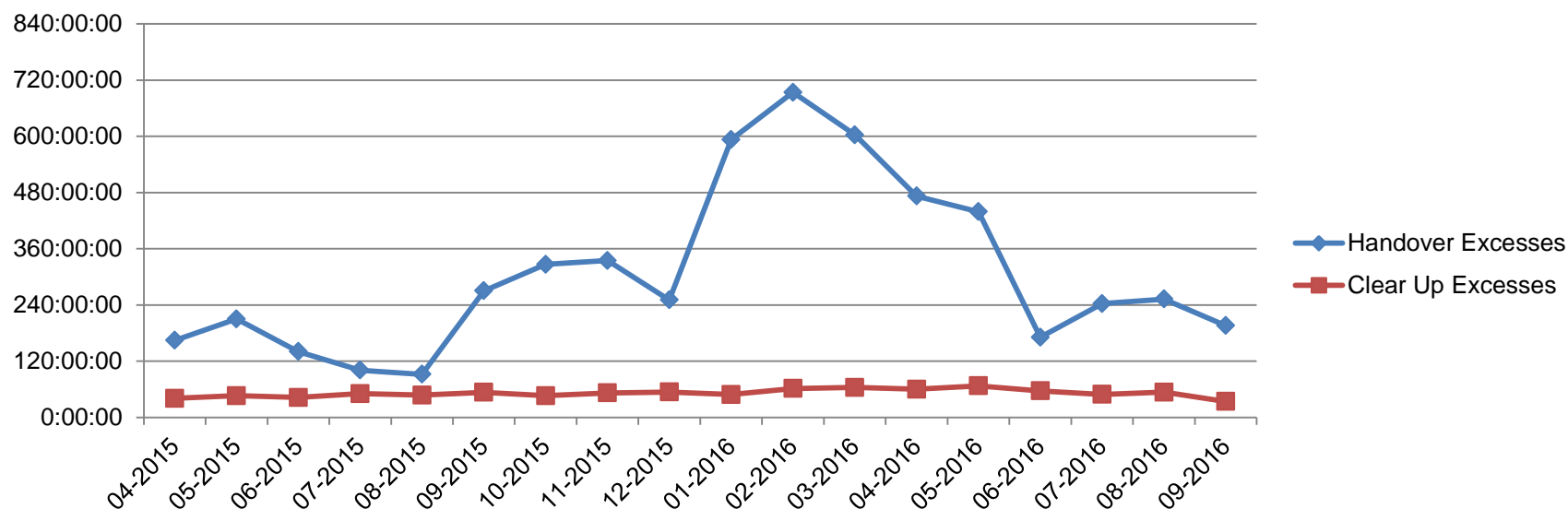


Get involved



Excess Handover Delays.

PHT Handover and Clear up excess for 17 Months

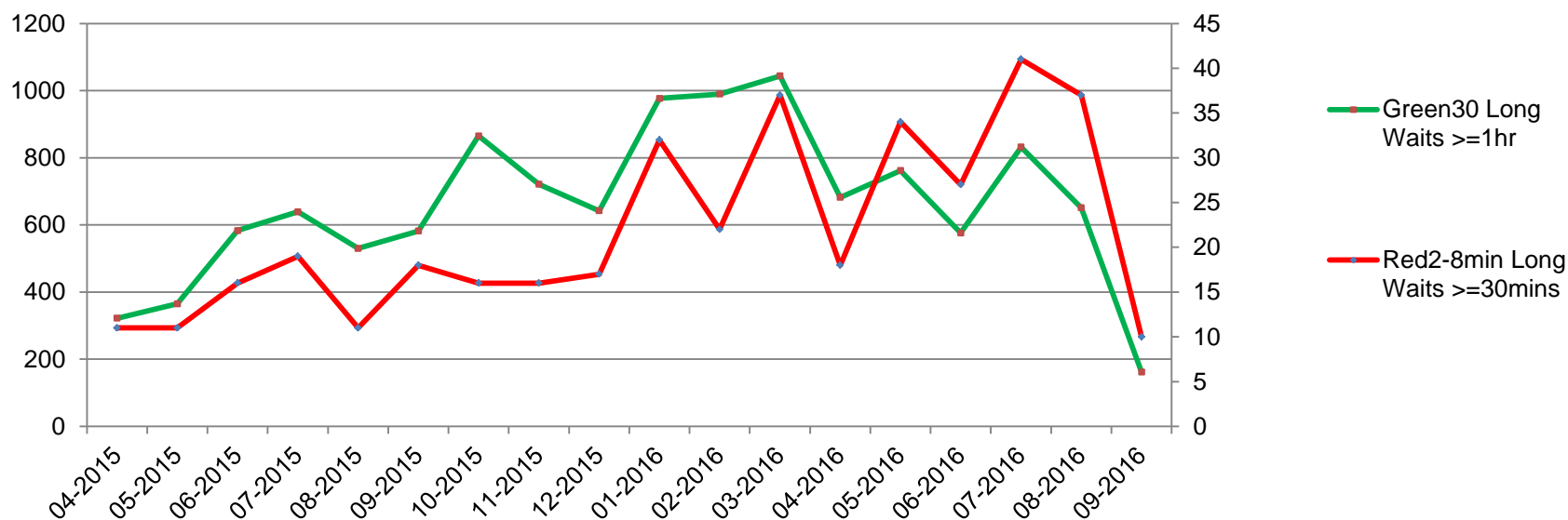


Get involved



Long Waits by Category.

Red and Green Long waits by Month



Get involved



Risks

- Retention of experienced staff.
- Recruitment of qualified staff.
- Availability of alternative care pathways.
- Safe Space-picked up by Portsmouth CCG.
- Winter resilience.
- Long waits for Green category patients (risk register).
- Hospital/System resilience and capacity and its impact on Hospital Handover delays.

Get involved



Developments and Mitigation

- Specialist Paramedic Recruitment and Retention.
- Band 6 Paramedic.
- Certificate in Paramedic Practice.
- Patient Long wait reviews.
- Rota review to improve staff retention.
- Introduction of ePR.
- Narp.
- Continued link with SRG and wider system resilience/escalation plans and actions.
- System Work streams (including appropriate conveyance, and Care Home, Residential homes, review of Frailty patients (Green)).
- Vanguard Pilot.

Get involved



South Central Ambulance Service **NHS**
NHS Foundation Trust

Questions

Get involved